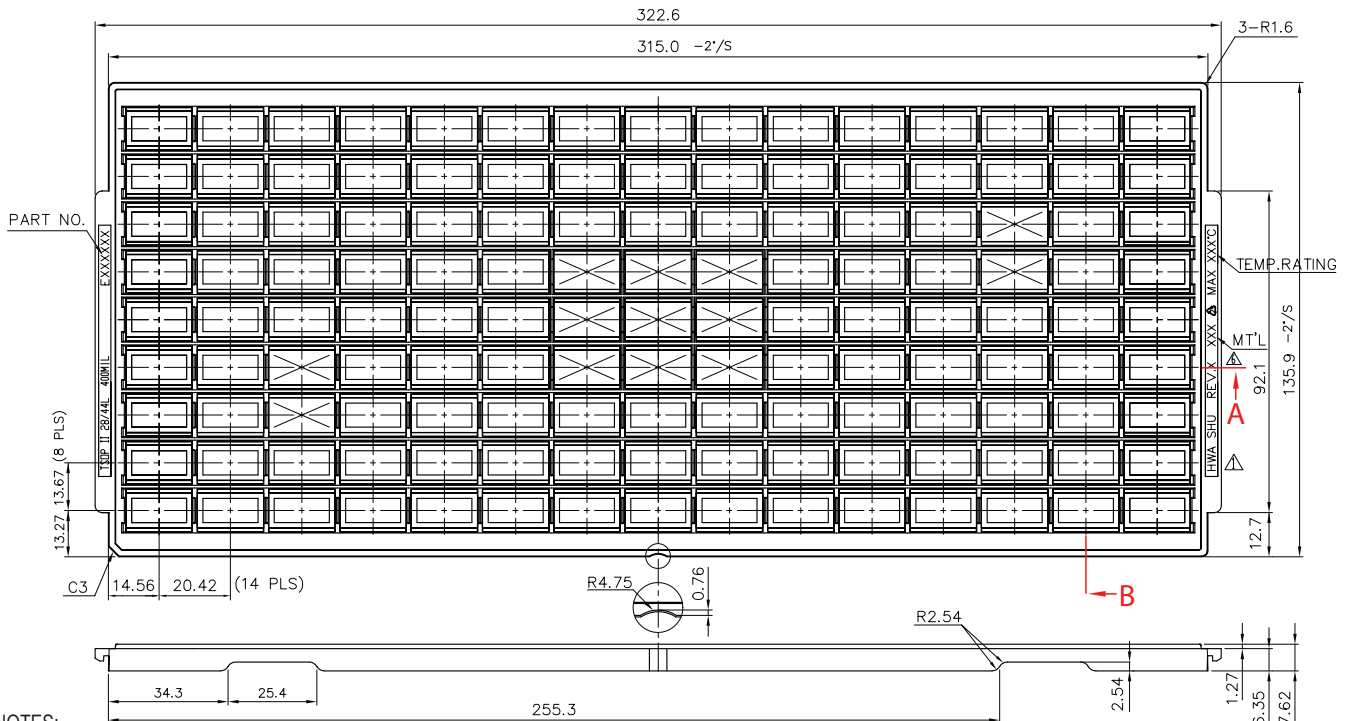
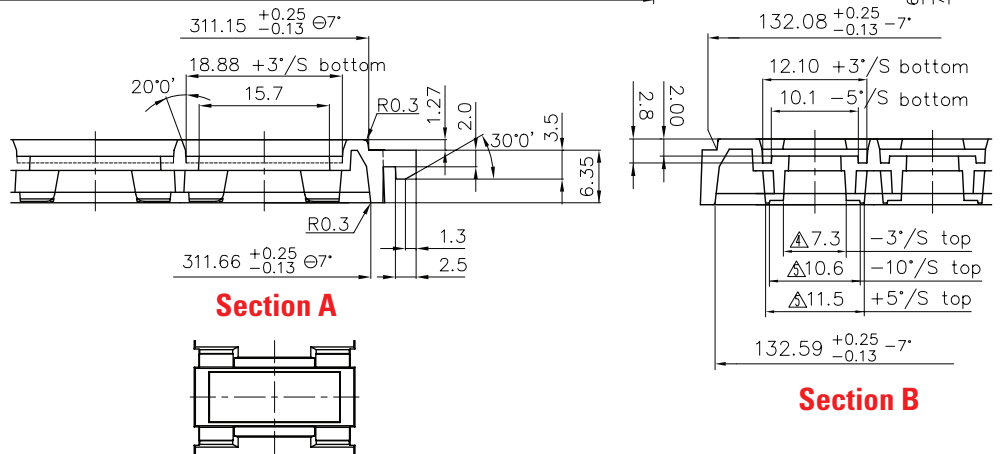


Tray Critical Dimensions

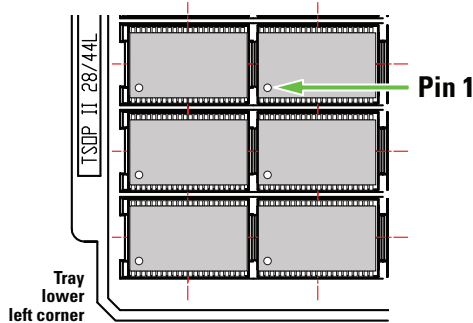


NOTES:

1. Surface electric resistivity of tray ranges from: 1E+5 to 1E+12 Ohm/sq.
2. The molded tray's material shall be rigid enough to avoid damage to the components during handling, loading, backing, testing, shipping, and locating.
3. 150°C is the maximum operating temperature the empty tray can be subject to during 48 continuous hours baking without violating the dimensional tolerance of the tray.
4. Trays are stackable without interference and will not stick together during and unstacking operation.
5. Warpage is within 0.76 mm
6. The cells marked with the cross symbol for vacuum pickup area
7. Total usable cells 9 x 15=135
8. The tray meets JEDEC standard.



Pin 1 Orientation



Typical Label Specifications

RAMTRON FMxxxx-TG

1 (1P) SUPP PROD ID:

2 (1T) LOT NUMBER:

3 (Q) QUANTITY:

4 R/C NO: T944G

5 COUNTRY OF ORIGIN: THAILAND

6 0925 (D) DATE CODE:

7 BOX: 1 OF 1

8 QA Stamp:

1. Product number
2. Lot number (max. 2 lots)
3. Quantity (of ea. lot)
4. Internal mfg. no. (optional)
5. Country of origin
6. Date code
7. No. of boxes in shipment
8. Quality assurance stamp

Ramtron International Corporation
 1850 Ramtron Drive, Colorado Springs, CO 80921
 (800) 545-FRAM, (719) 481-7000
 www.ramtron.com